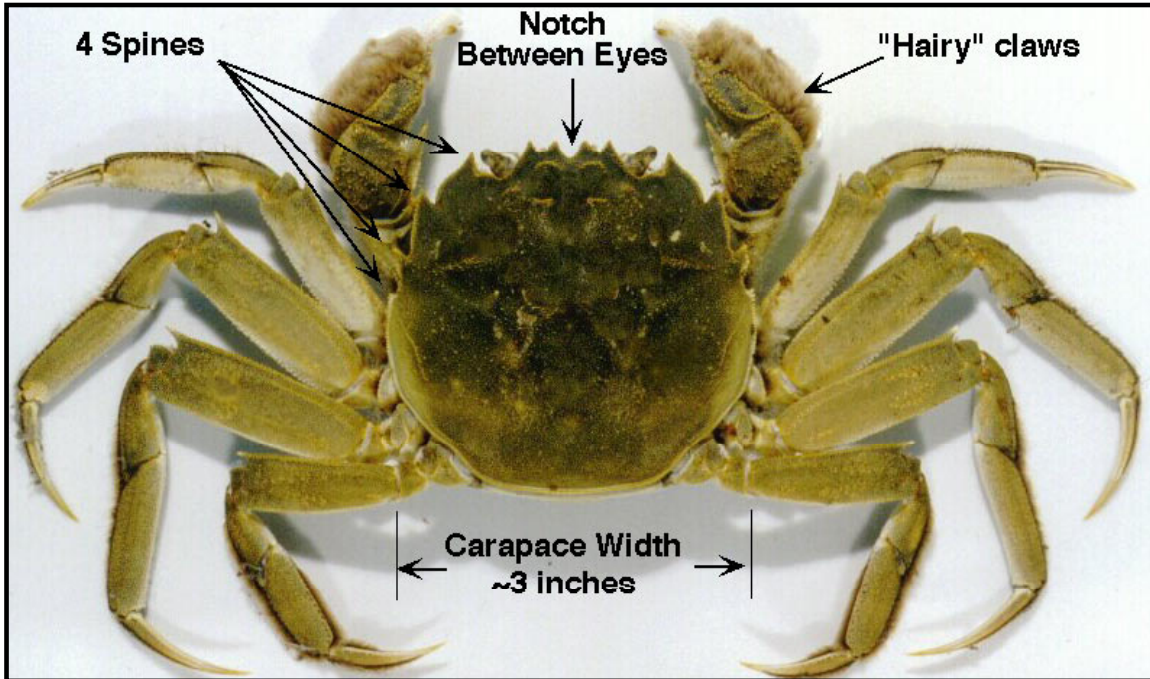


WANTED



DEAD or ALIVE

MITTENCRAB

ANON-NATIVESPECIESINTHECOLUMBIARIVER

This crab recently entered the Columbia River system.

It may damage native species and habitat. Help track and document its spread and impact.

Distinguishing characteristics are its lar ge, "hairy" claws and presence in freshwater.

If you find one of these crabs in the Columbia River, or elsewhere, please report it to a local Department of Fish and Wildlife office or call the toll-free

Oregon Invasive Species Hotline: 1-866-INV ADER (1-866-468-2337)

*For additional information on Mitten crabs contact:
Center for Lakes and Reservoirs • Portland State University
503.725.3834 • www.clr.pdx.edu*

in cooperation with

Pacific States Marine Fisheries Commission • Bonneville Power Administration • US Fish and Wildlife Service